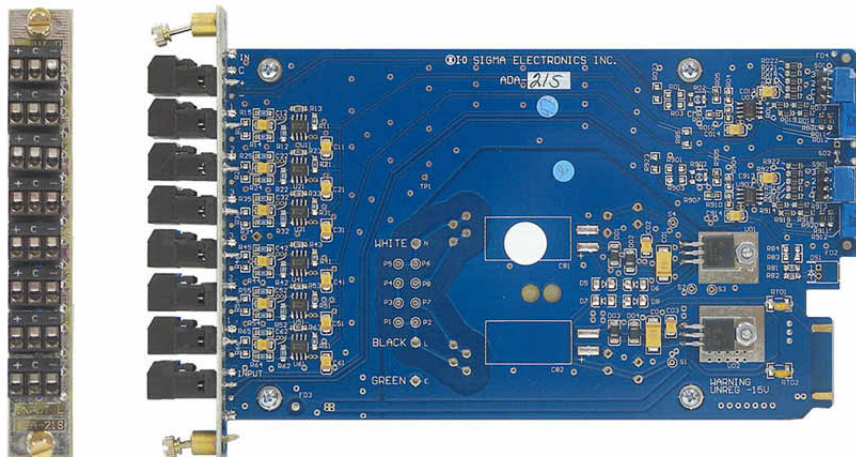


DUAL 1 X 3 HIGH PERFORMANCE ANALOG STEREO AUDIO DA - ADA21S

FEATURES

- High performance, low cost
- Dual 1x3 input/output
- Balanced audio
- 1 slot 2100 Series module



SPECIFICATIONS

INPUTS

Two (2), Balanced, Hi Z
 Level +24 dBm, max.
 CMR -70 dB 20-10kHz
 -60 dB 10k-20kHz
 Impedance 30 k Ω
 Gain Range -9 to +27dB
 Connectors Pluggable Terminals

OUTPUTS

Three (3) per channel, Balanced
 Bandwidth 150 kHz
 THD & Noise 0.05%, 20 Hz to 20 kHz
 Hum & Noise -80 dBm @ unity
 Level 24 dBm, maximum
 Freq. Response ± 0.2 dB to 100 kHz
 Impedance 100 Ω
 Channel Separation >80 dB to 20 kHz

Prices and specifications are subject to change without notice