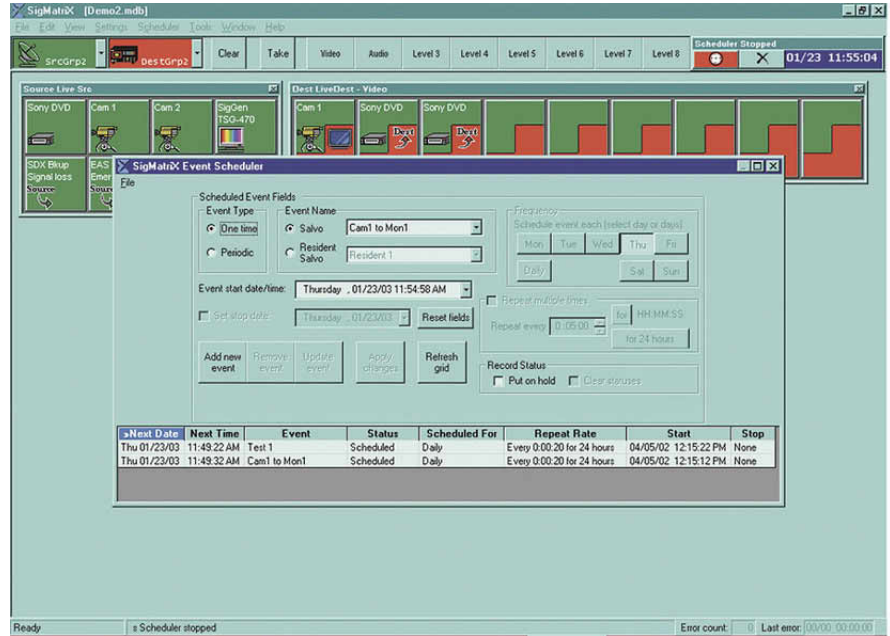


REMOTE ROUTER CONTROL PACKAGE, INCLUDES MODEM AND SIGMATRIX - MCPSIGMATRIX

FEATURES

- Works with Windows (95, 98, Me, NT, XP, 2000)
- Easy To Use Interface
- Customizable Screens
- Unlimited Number of Salvos
- Includes External Modem



SigMatrix software with external modem - SigMatriX is a Windows-based software control package for all Sigma routing systems. Communication via a PC's serial port allows the operator full control of up to 8 router levels. Remote control of routers via modem is also supported. Functions include real-time source to destination routing, salvo execution, and event scheduling. Source and destination buttons are organized on the SigMatriX screen in a customizable way that is convenient for the operator. Each button can be given two lines of text and assigned a graphic. A library of graphic images is provided and additional images can be easily added.

Routing with SigMatriX is as simple as clicking on an input button followed by an output button. For more complex routes, individual levels can be selected for breakaway and split mode takes, and an unlimited number of salvos can be created for one-click routing. The built-in scheduler allows SigMatriX to perform salvos at a set time in the future, either as one-time events or periodically. An activity log records all system activity with timestamps.

Prices and specifications are subject to change without notice

REMOTE ROUTER CONTROL PACKAGE, INCLUDES MODEM AND SIGMATRIX - MCP SIGMATRIX



SPECIFICATIONS

OPERATING SYSTEM/COMPUTER

REQUIREMENTS

Operating System	Windows® (95, 98, Me, NT, XP, 2000)
Compatibility	IBM®
Processor	Pentium® 100 MHz or higher
RAM	32 MB minimum recommended
Monitor	SVGA minimum recommended
Disk Space	10 MB
Input Device	Mouse or Touch Screen

COMMUNICATIONS

Comm. Standards	RS-232 or RS-422
Comm. Ports	Supports 4 ports
Baud Rate	9600, 19200, 38400, 57600

EXTERNAL MODEM

US Robotics	Configured to work with Sigma routers
-------------	---------------------------------------

FEATURES

Control Screen	Drop Down Menus
Source & Destination	32 groups with up to 128 entries per group
Salvos	One group with unlimited number of entries
Resident Salvos	Up to 10 (dependent on router system)
Command Buttons	Programmable functions (Source, Destination, Salvo)
Button ID	2 lines of text; image 32x32 pixels, 256 color
Salvo	Single button execution of command string
Number of Salvos	Unlimited
Event Scheduling	Specific or periodic time/date
Response Logging	Responses to all commands are monitored and logged with a time stamp for later review
Password	System level password

Prices and specifications are subject to change without notice